

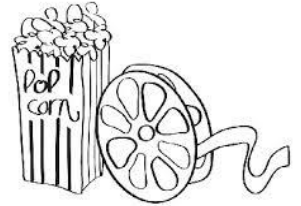
November

SWATON QUIZ NIGHT - SATURDAY 14TH NOVEMBER 2015

Come along on your own & join fellow quizzers or bring a team and book a table. Tickets are only £7 per person which includes entry in to the quiz as well as a delicious 2 course meal. Tickets for the Swaton Quiz night are now on sale - book now to avoid disappointment as the night is always a sell-out. Contact Elaine (421 769), Liz (421 217) or Jean (421 485)

CINEMA CLUB – SATURDAY 7TH NOVEMBER

This month's film is a must see, award winning production so come along and enjoy a Saturday evening in the hut. The bar opens at 7pm, the film starts at 7.30. The bar is open for wines, spirits and cold drinks. Hot dogs, hot drinks & ice creams are also available during in the interval. Membership - £2 on the night or annual membership £10 pp. A list of films can be seen in the hut near the bar.



SATURDAY MORNING CAFE - 9.30AM TO 12PM



A great way to kick start the weekend. Every Saturday morning your village hut becomes 'Swaton Café' – a place to catch up with friends & fellow villagers. Come along for breakfast – you can purchase a bacon roll (eat in or take away) and enjoy a freshly brewed cup of tea, coffee (decaf & filter available) or hot chocolate. You can also treat yourself to a delicious cake from a selection of freshly baked treats – and why not . . . after all it is the weekend !!

This is also your chance to collect your Saturday newspaper (which must be ordered in advance from Liz – 421 217).

VILLAGE LUNCH - MONDAY 9TH NOVEMBER - 12PM TO 1.30PM **(2nd Monday of every month)**

You'll always find a choice of hearty soups on the menu (often made from locally grown produce from the village allotment). For those with a bigger appetite there is a second course (or if you prefer just have a main course) of Jacket Potatoes with beans &/or cheese and a fresh side salad. It won't break the bank to come along . . . a bowl of soup & bread is £1.50 or have two bowls for £2.50. A jacket spud with fillings and salad is also £2.50.



EVERYONE IS WELCOME – NO NEED TO BOOK - So for one day a month let someone else cook for you whilst you chill out and enjoy a delicious, nutritious lunch amongst friends.

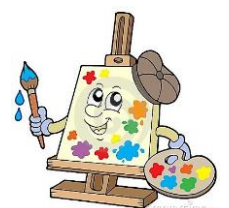


SWATON BAR – EVERY FRIDAY EVENING IN THE HUT – 8.30PM TIL WE CLOSE

The village bar has a good selection of soft drinks, bottled / local beers, chilled lagers, red / white wines and a variety of spirits. Crisps, chocolate and snacks are also available - all offered at competitive prices.

CRAFT GROUP - EVERY TUESDAY 9.30AM IN THE HUT

If you're creative and enjoy any form of Art or Craft why not come along and work on your creative project amongst friends, have a chat, enjoy a cuppa and share, exchange or improve skills ... so if its Crochet or Tatting, Beadwork or Cross Stitch, Lace or Patchwork or you're simply a dab hand with a pair of knitting needles or a paint brush and canvas then don't be shy – after all you'll be amongst friends. **Contact Liz Harborow for more info – 01529 421 217**



HIRE 'THE HUT': *If you would like to book the hut for a party or meeting contact Mike Kempster on 421 840*